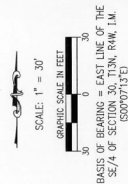
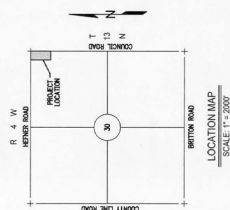


A PART OF THE NE/4 OF SECTION 30, T13N, R4W, I.M.
OKLAHOMA CITY, OKLAHOMA COUNTY, OKLAHOMA



EX.	LEGEND
R/W	EXISTING
BL	RIGHT-OF-WAY
U/E	BUILDING LIMIT LINE
D/E	UTILITY EASEMENT
C/A	DRAINAGE EASEMENT
(ESMT.)	COMMON AREA
P/D/E	EASEMENT
	PRIVATE DRAINAGE EASEMENT

ADDRESSES

NOTES

- [illegible]

FINAL PLAT
PROJECT-TITLE

Golden Land Surveying

7304 NW 164th Street, Suite #5, Edmond, Oklahoma 73013
C.A.# 7263 / Exp. Date = 6/30/2022
Telephone: (405) 802-7883 Job No:171042
troy@goldenls.com